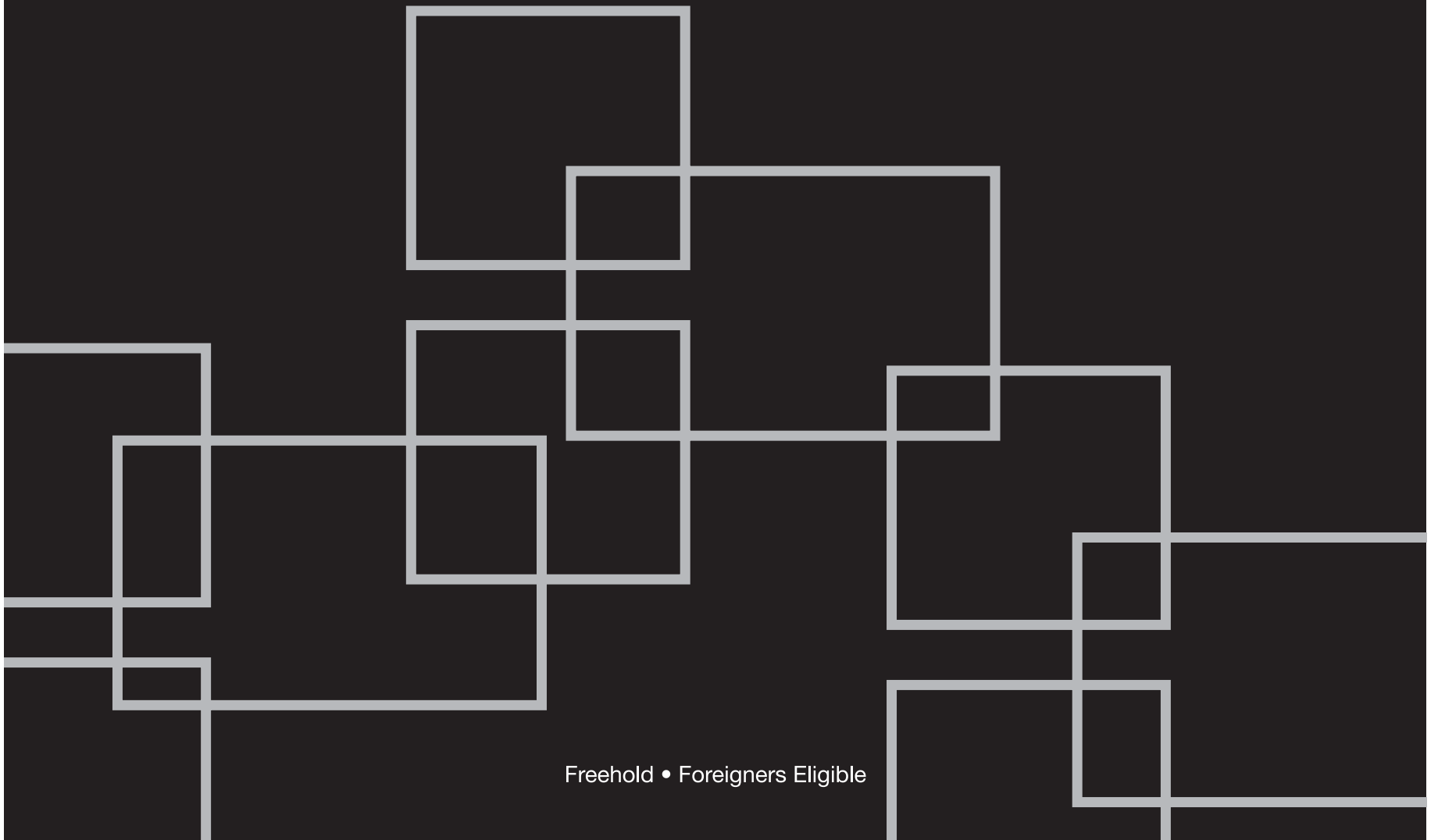
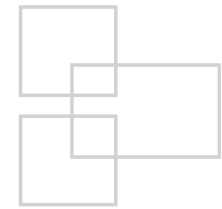
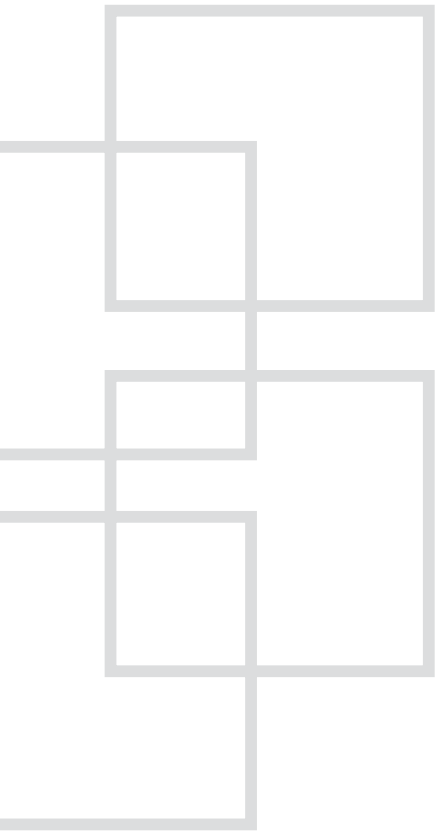


Where the fundamentals of life meet



Freehold • Foreigners Eligible

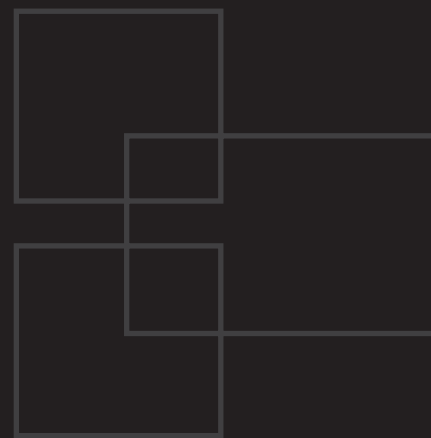


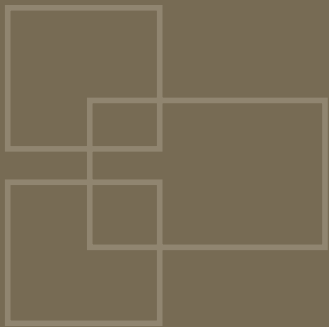
A reverie made of extraordinary luxury; this is a prestigious living created beyond the definition of exclusivity. An exquisite life of utmost rarity, the fluency of architecture excellence in this masterpiece of 46 apartments and 4 shops embraces you in perfection. With 5-storey of lavishly adorned apartments and penthouses, this is a home where you have everything you need.

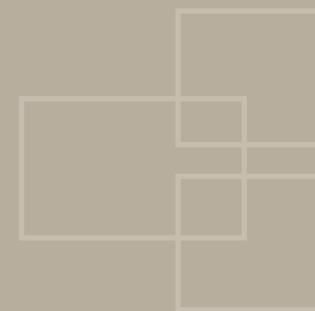




It's a life where you live the way you want



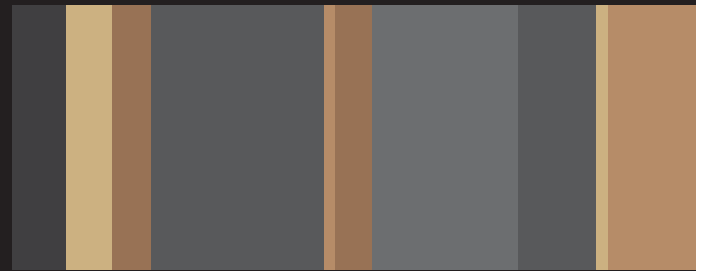
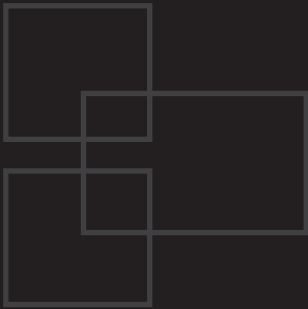




Where convenience is defined by minutes

A star among its neighbours, Urban Lofts beholds exceptional pathways that link you to an envy of popular destinations unlike any. In close proximity to the finest avenues that fulfill every desire, life is truly complete.

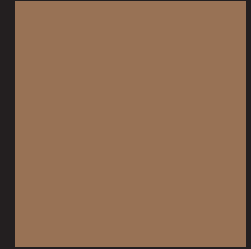






Travel with ease via the Central Expressway (CTE) or simply take a 1-minute walk to the Farrer Park MRT nearby; you can go everywhere and anywhere in Singapore without hassle. Conveniently located at 2 MRT stops away from the Orchard retail belt and a stone's throw away from upcoming attractions, you are in the right place to live a dream life.





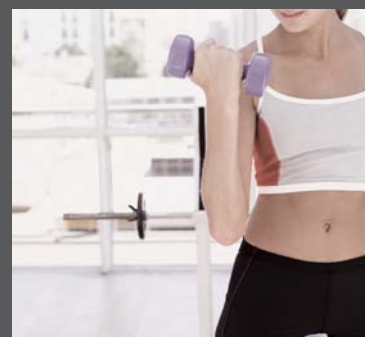


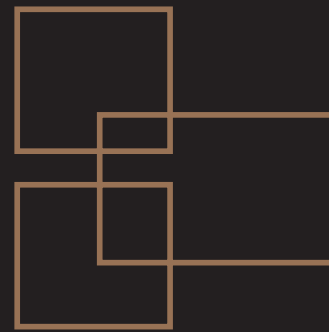
Artist's Impression



It's a living that truly let you get carried away

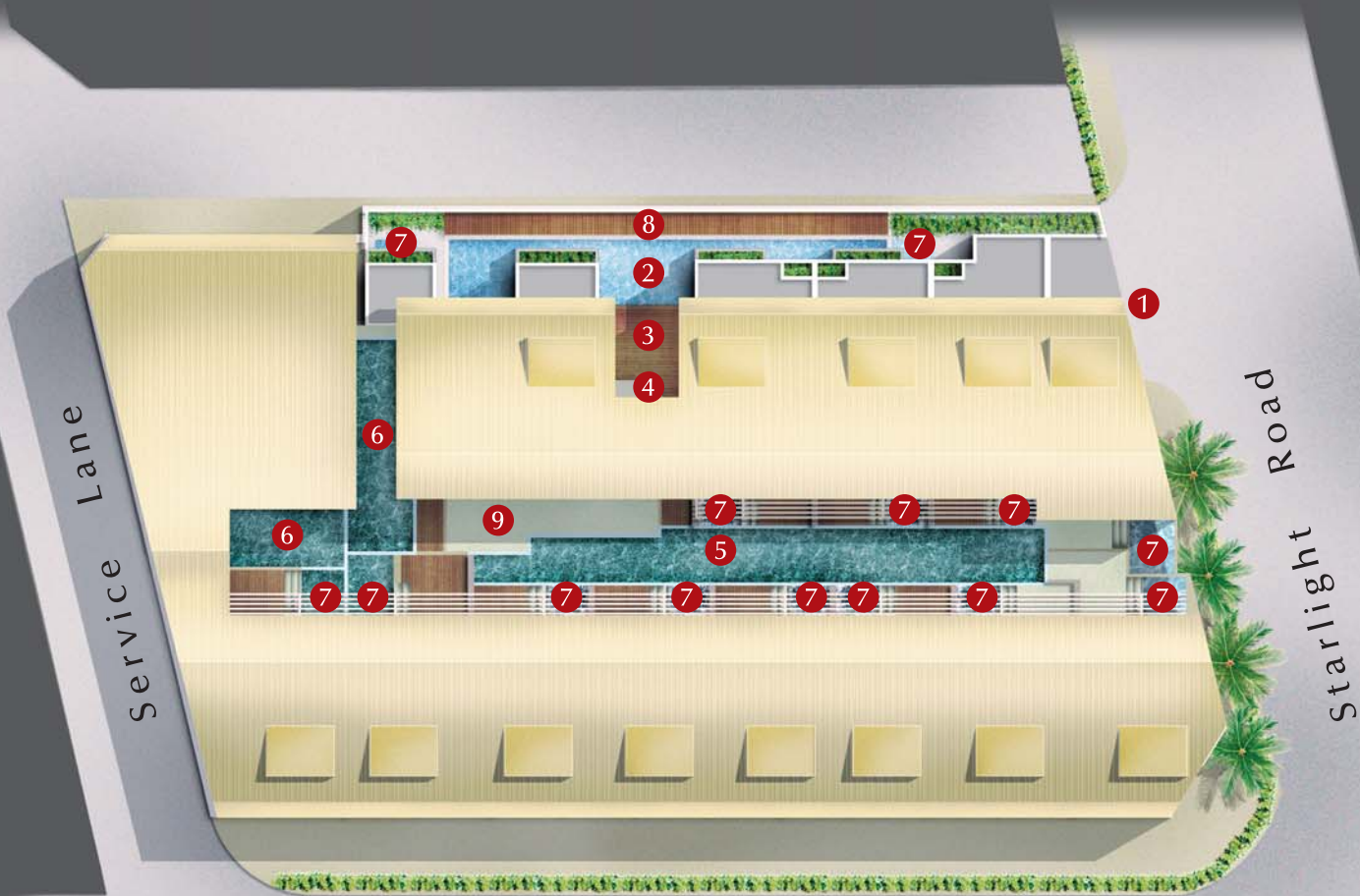
With a lap pool, gymnasium and barbeque area to host your leisurely pursuits, you can finally relax in the tranquil and verdant landscape or enjoy a gathering with family and friends to foster deeper bonds. Nothing beats a life in the vicinity of the City.







URBAN LOFTS



Rangoon Road

Legend:

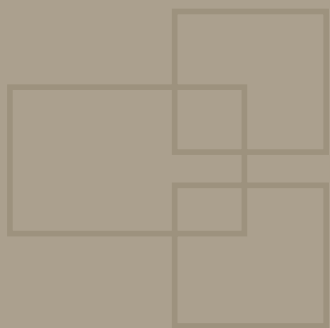
- | | | | | |
|----------------------|--------------------|-------------------|---------------|--------------------------|
| 1. Driveway entrance | 2. Common lap pool | 3. BBQ area | 4. Gym | 5. Semi-private lap pool |
| 6. Private pool | 7. Private jacuzzi | 8. Timber decking | 9. Lift lobby | |





A life where you'll find everyday is fulfilling

Here, life is simply more than just beautiful. This is where you can find what you require at your doorstep. With 4 units of retail shops at the 1st floor to serve your every need, the convenience factor is being upped another notch. No matter where you want to be, this is a home that brings you everything.

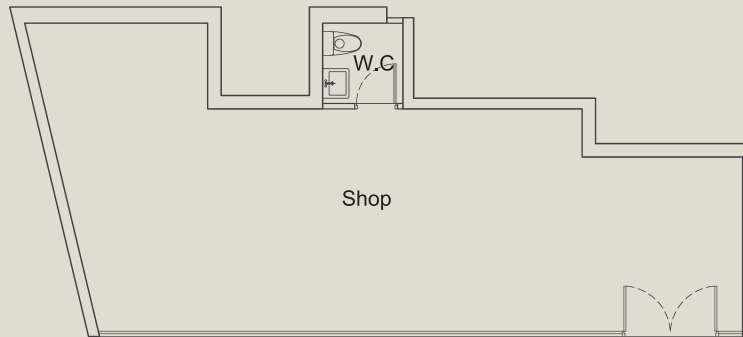


Retail Shops

Shop 1

Unit #01-01

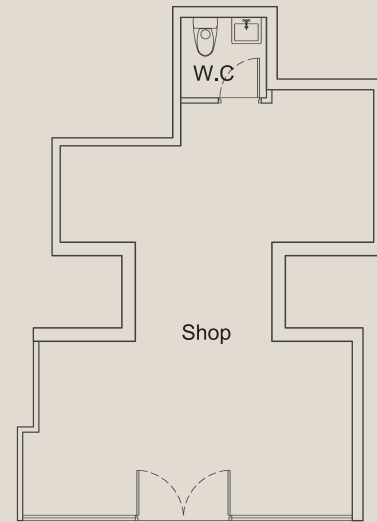
Area 657 sqft / 61 sqm



Shop 2

Unit #01-02

Area 474 sqft / 44 sqm



Shop 3

Unit #01-03

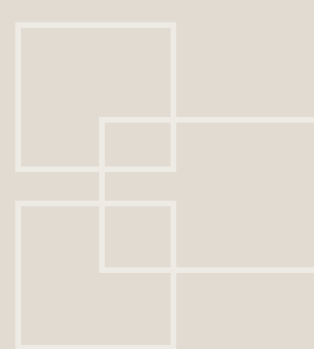
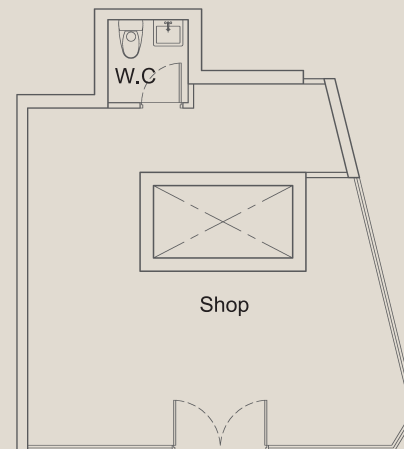
Area 463 sqft / 43 sqm



Shop 4

Unit #01-04

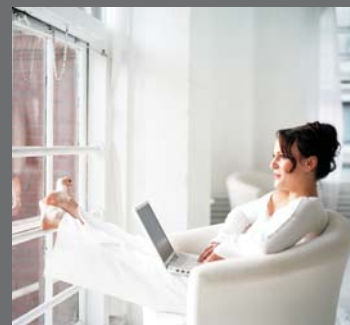
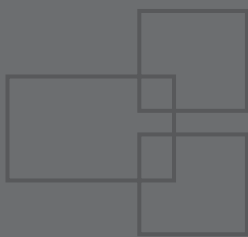
Area 463 sqft / 43 sqm



Residential

Unwind and enjoy work in peace

A fusion of classy comfort and relaxed functionality, it's a living that reflects stylish contemporaries. A luxurious abode for the select few, it envelops you in boundless lifestyle indulgences to pleasure your senses. If you are looking to work in the comfort of your own home, this is also the perfect place set up to meet whatever you demand.



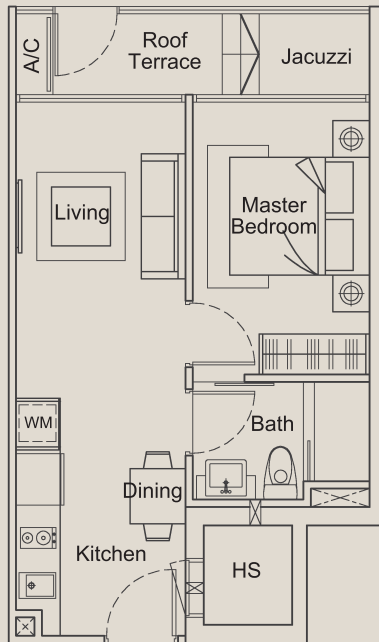


Impression only

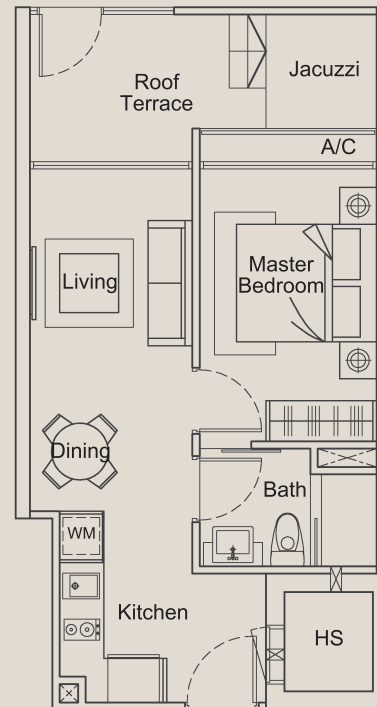
Connecting you with the ideals that make a home truly comfortable, nothing is created by mundane. Touching every corner with irresistible quality, all the 1 and 2-bedroom apartments as well as the 1, 2+1 and 3-bedroom penthouses dazzle with impeccable elegance. From the kitchen to the bedrooms, you will find sizzling finishes and fittings that make coming home a yearning. Decked out in exquisite elements that meet your glance every moment, being at home definitely brings uncompromising contentment.



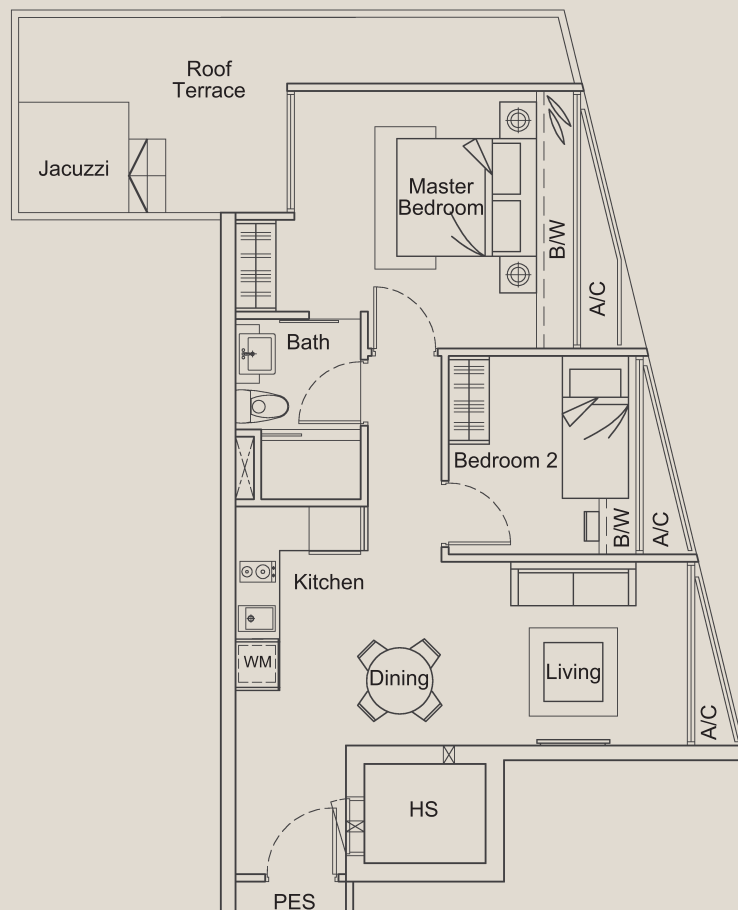
Impressions only



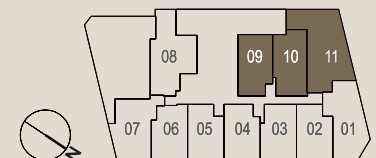
Type A (1-Bedroom)
 Unit #02-09
 Area 452 sqft / 42 sqm
 (inclusive of roof terrace,
 a/c ledge & jacuzzi)

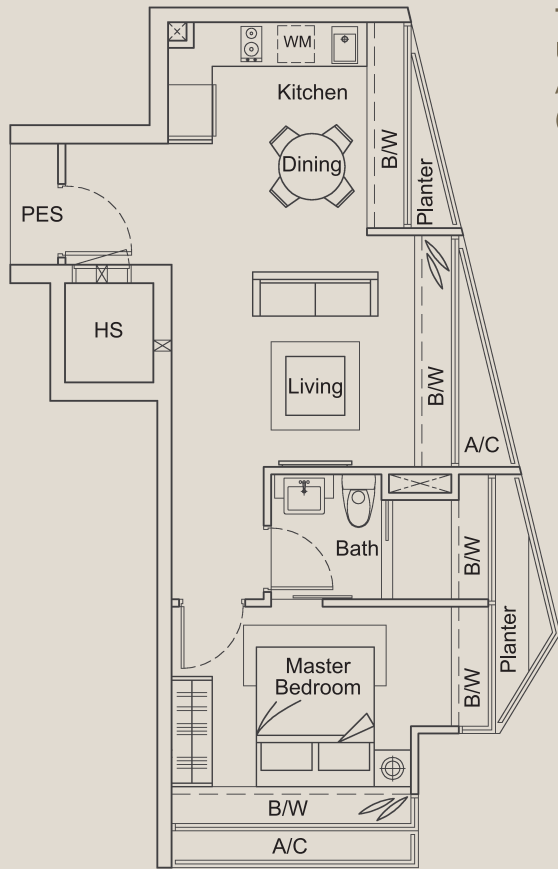


Type B (1-Bedroom)
 Unit #02-10
 Area 484 sqft / 45 sqm
 (inclusive of roof terrace,
 a/c ledge & jacuzzi)

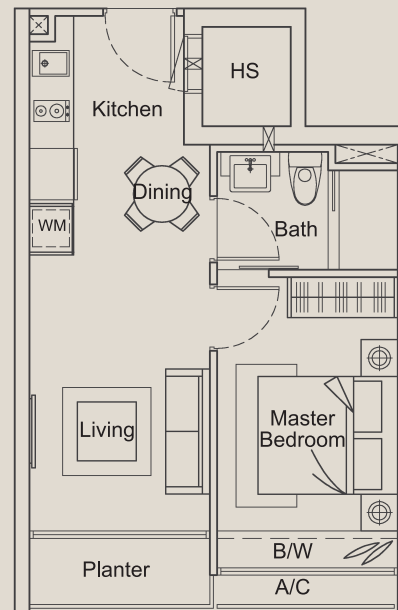


Type C (2-Bedroom)
 Unit #02-11
 Area 786 sqft / 73 sqm
 (inclusive of roof terrace,
 bay window, a/c ledge & jacuzzi)

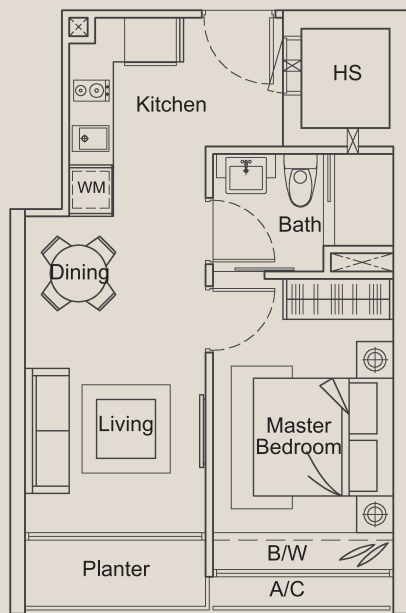




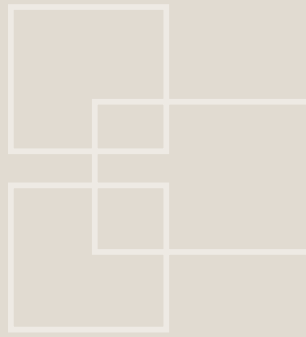
Type D (1-Bedroom)
 Unit #02-01, #03-01, #04-01
 Area 592 sqft / 55 sqm
 (inclusive of bay window, planter & a/c ledge)

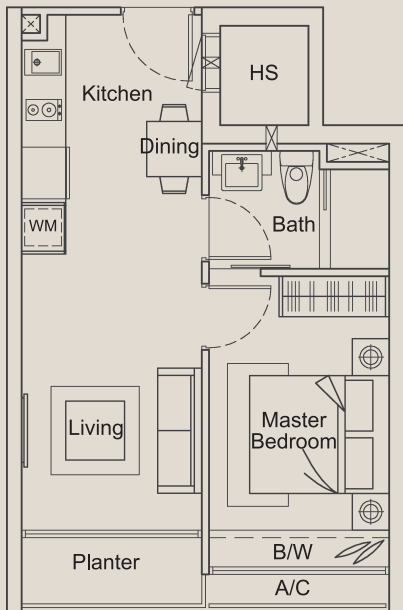


Type E (1-Bedroom)
 Unit #02-02, #03-02, #04-02
 Area 431 sqft / 40 sqm
 (inclusive of bay window, planter & a/c ledge)



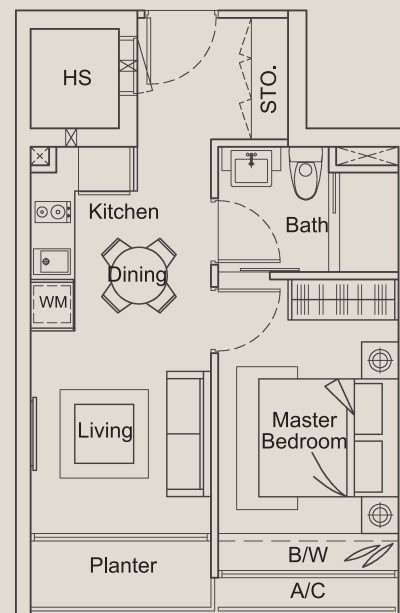
Type F (1-Bedroom)
 Unit #02-03, #03-03, #04-03
 Area 420 sqft / 39 sqm
 (inclusive of bay window, planter & a/c ledge)





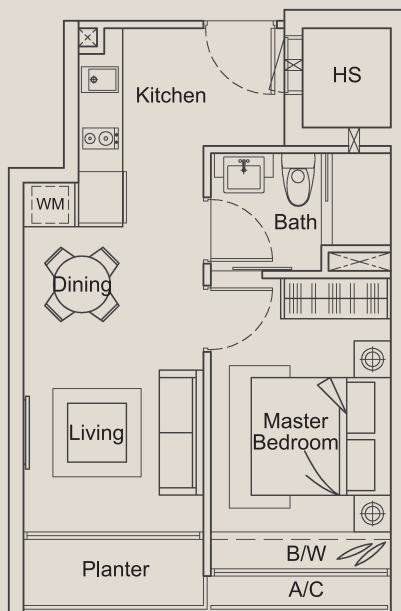
Type G (1-Bedroom)

Unit #02-04, #03-04, #04-04
 Area 431 sqft / 40 sqm
 (inclusive of bay window,
 planter & a/c ledge)



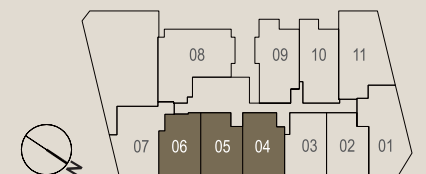
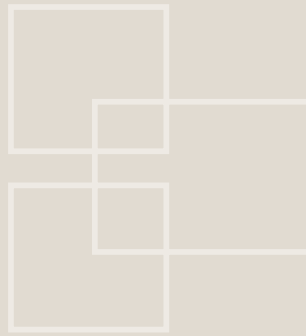
Type H (1-Bedroom)

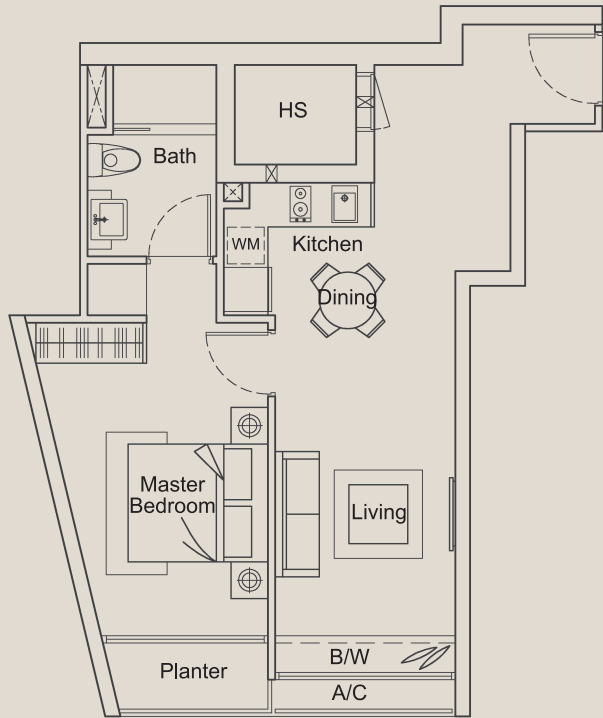
Unit #02-05, #03-05, #04-05
 Area 431 sqft / 40 sqm
 (inclusive of bay window,
 planter & a/c ledge)



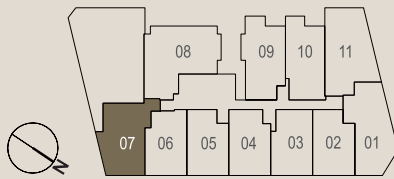
Type J (1-Bedroom)

Unit #02-06, #03-06, #04-06
 Area 431 sqft / 40 sqm
 (inclusive of bay window,
 planter & a/c ledge)



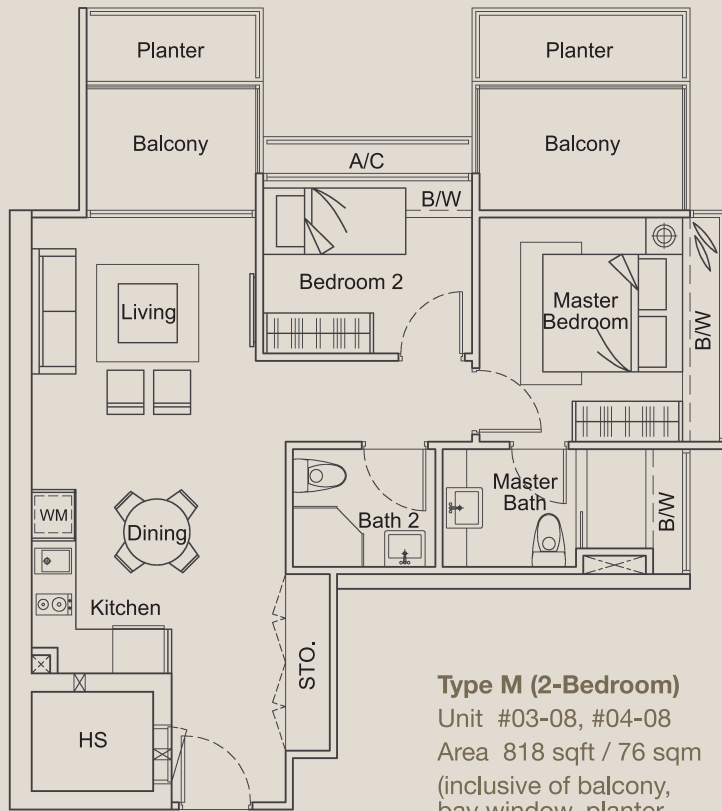


Type K (1-Bedroom)
 Unit #02-07, #03-07, #04-07
 Area 560 sqft / 52 sqm
 (inclusive of bay window,
 planter & a/c ledge)

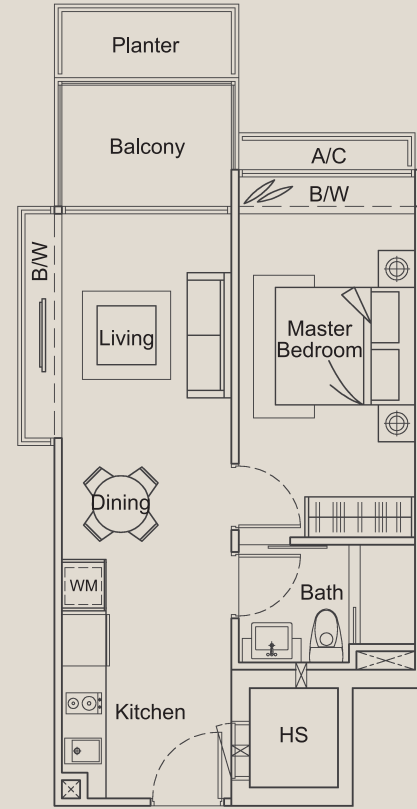


Type L (1-Bedroom)
 Unit #02-08
 Area 635 sqft / 59 sqm
 (inclusive of roof terrace,
 a/c ledge & jacuzzi)

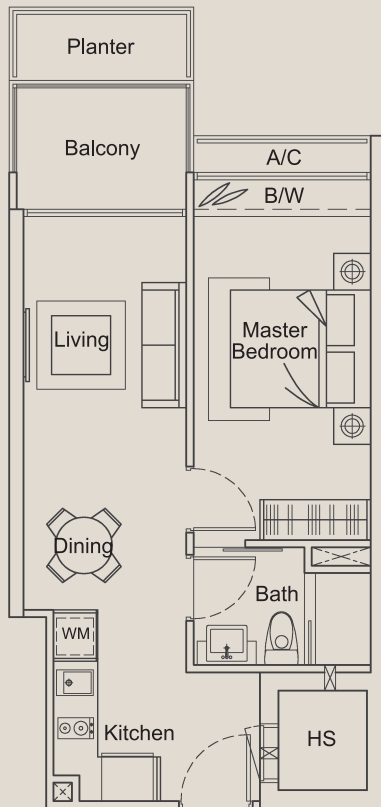
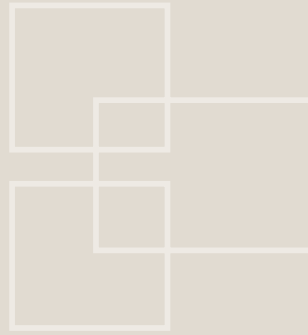




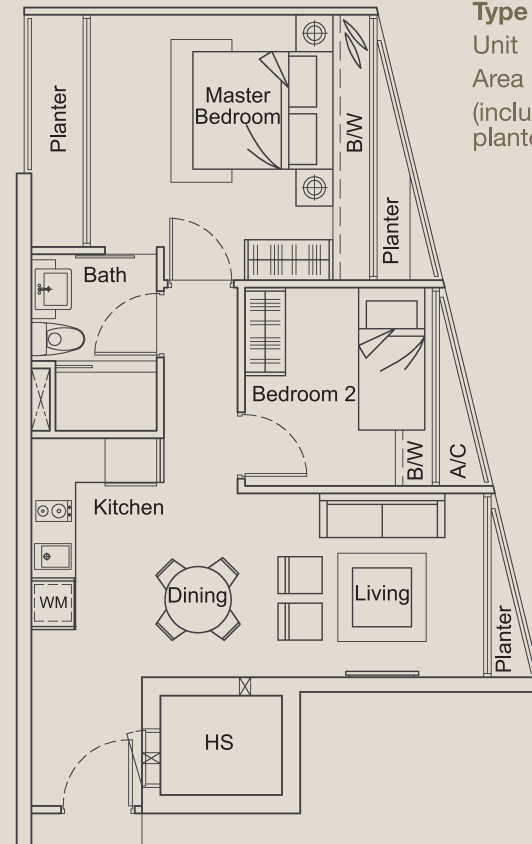
Type M (2-Bedroom)
 Unit #03-08, #04-08
 Area 818 sqft / 76 sqm
 (inclusive of balcony,
 bay window, planter
 & a/c ledge)



Type P (1-Bedroom)
 Unit #03-09, #04-09
 Area 527 sqft / 49 sqm
 (inclusive of balcony,
 bay window, planter & a/c ledge)



Type Q (1-Bedroom)
 Unit #03-10, #04-10
 Area 506 sqft / 47 sqm
 (inclusive of balcony,
 bay window, planter & a/c ledge)



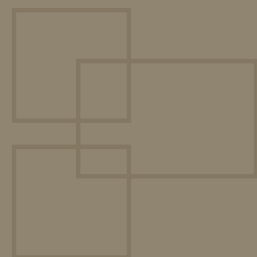
Type R (2-Bedroom)
 Unit #03-11, #04-11
 Area 646 sqft / 60 sqm
 (inclusive of bay window,
 planter & a/c ledge)



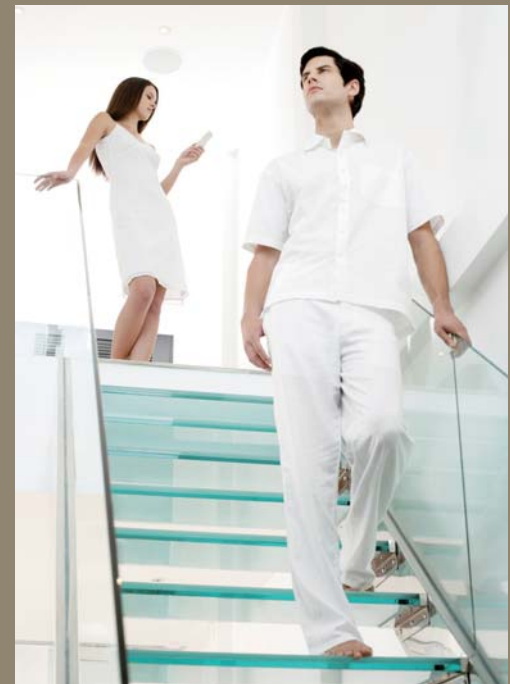


Artist's Impression

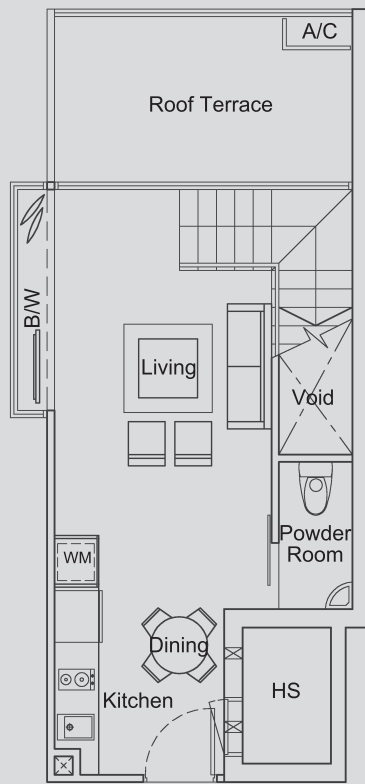
Penthouses



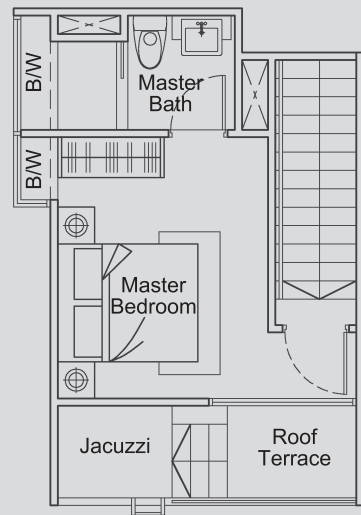
Where individuality and timeless charm personify the 13 units of penthouses, everything in them is an image of prestige. With its own jacuzzi and exclusive access to the roof top pool, each penthouse is an epitome of luxury. Impressively created, 2 units of the penthouses even come with their own specially designed swimming pool.



Penthouses

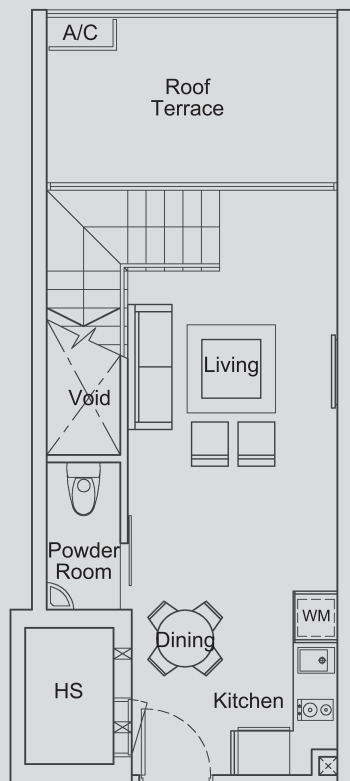


Lower

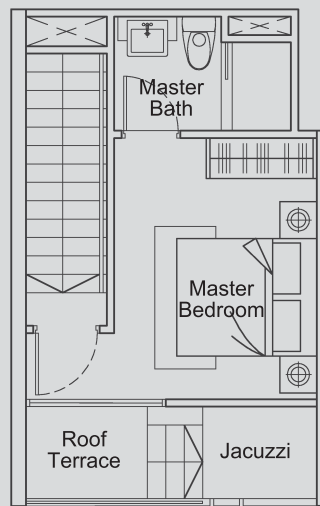


Upper

Type PH-A (1-Bedroom)
 Unit #05-10
 Area 797 sqft / 74 sqm
 (inclusive of roof terrace,
 bay window, a/c ledge & jacuzzi)



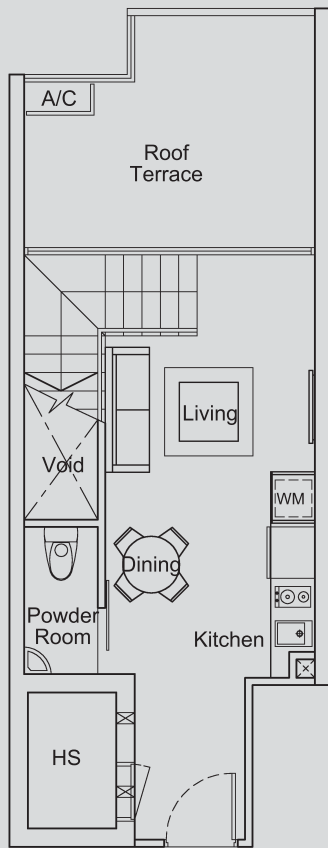
Lower



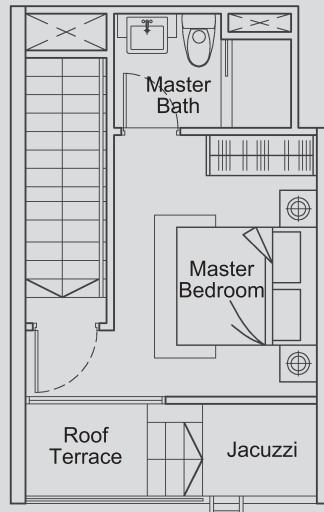
Upper

Type PH-B (1-Bedroom)
 Unit #05-11
 Area 764 sqft / 71 sqm
 (inclusive of roof terrace,
 a/c ledge & jacuzzi)





Lower



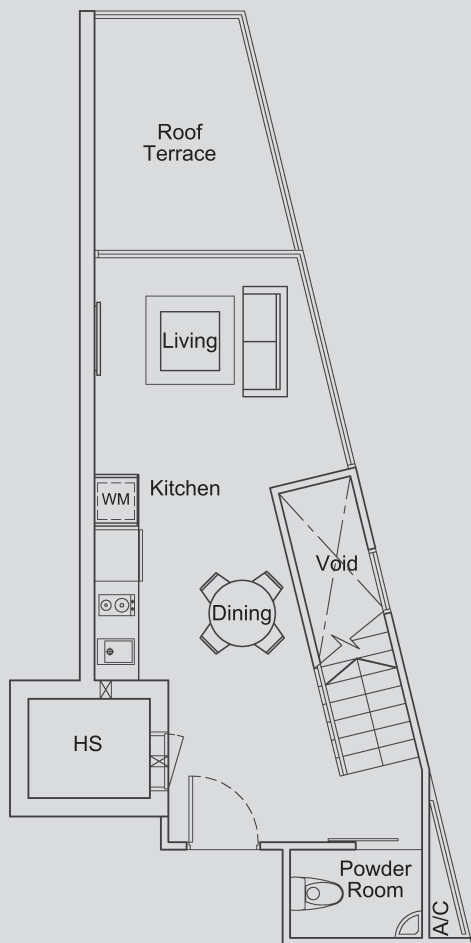
Upper

Type PH-C (1-Bedroom)

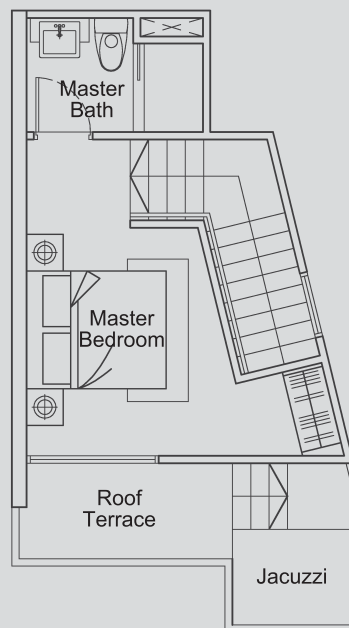
Unit #05-12

Area 753 sqft / 70 sqm

(inclusive of roof terrace, a/c ledge & jacuzzi)



Lower



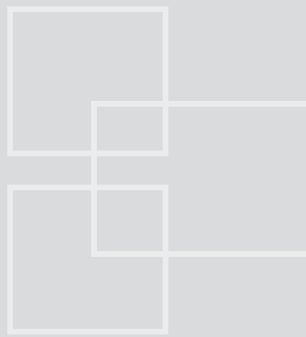
Upper

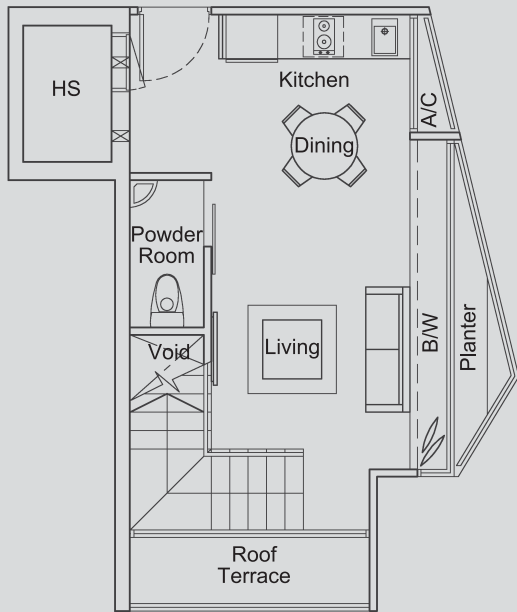
Type PH-D (1-Bedroom)

Unit #05-13

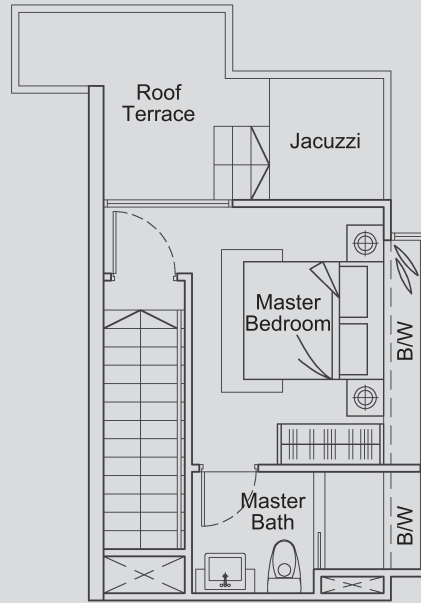
Area 786 sqft / 73 sqm

(inclusive of roof terrace, a/c ledge & jacuzzi)





Lower



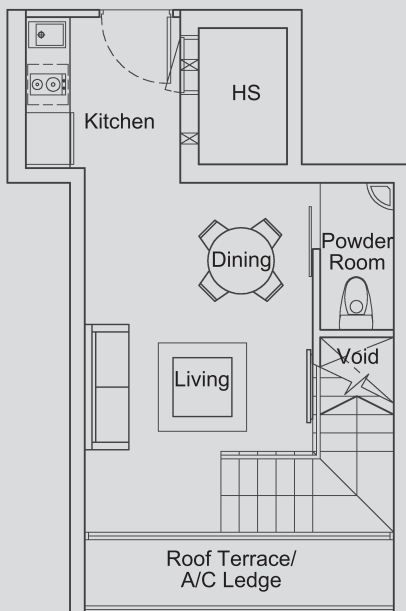
Upper

Type PH-E (1-Bedroom)

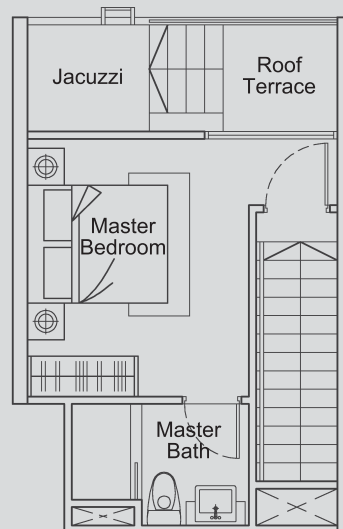
Unit #05-01

Area 764 sqft / 71 sqm

(inclusive of roof terrace, bay window, planter, jacuzzi & a/c ledge)



Lower



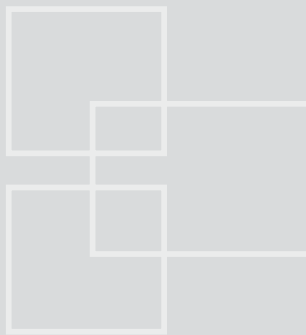
Upper

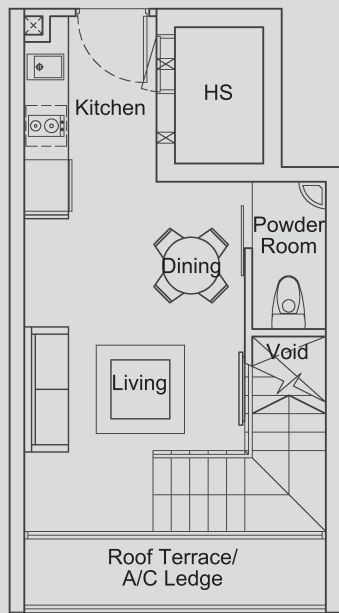
Type PH-F (1-Bedroom)

Unit #05-02

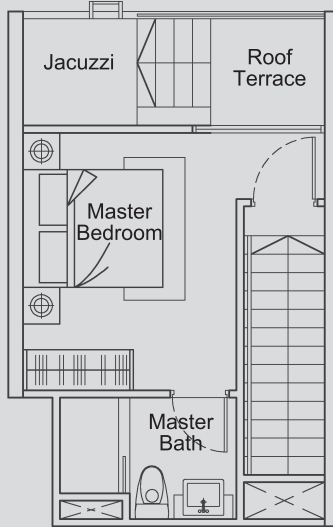
Area 678 sqft / 63 sqm

(inclusive of roof terrace, a/c ledge & jacuzzi)





Lower

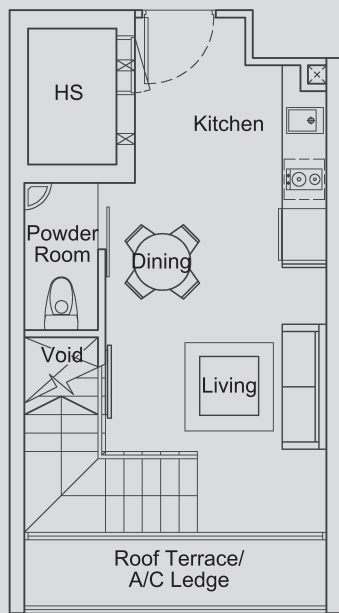


Upper

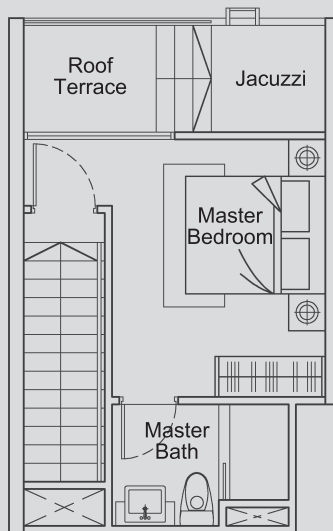
Type PH-G (1-Bedroom)

Unit #05-03

Area 667 sqft / 62 sqm
(inclusive of roof terrace,
a/c ledge & jacuzzi)



Lower



Upper

Type PH-H (1-Bedroom)

Unit #05-04

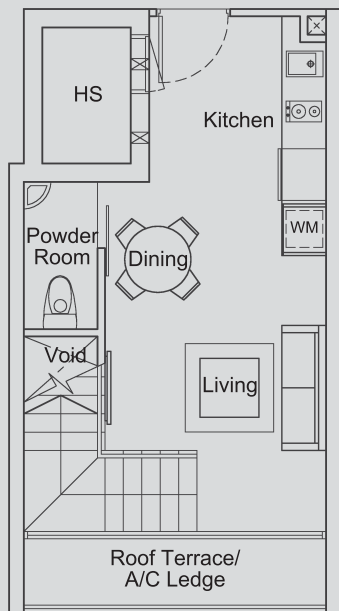
Area 678 sqft / 63 sqm
(inclusive of roof terrace,
a/c ledge & jacuzzi)



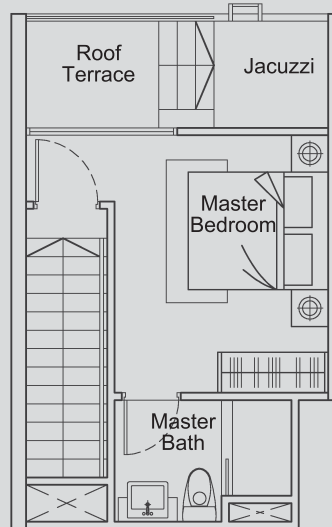
Type PH-J (1-Bedroom)

Unit #05-05

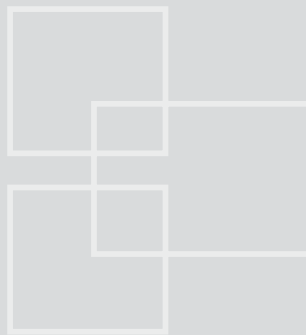
Area 678 sqft / 63 sqm
(inclusive of roof terrace,
a/c ledge & jacuzzi)



Lower



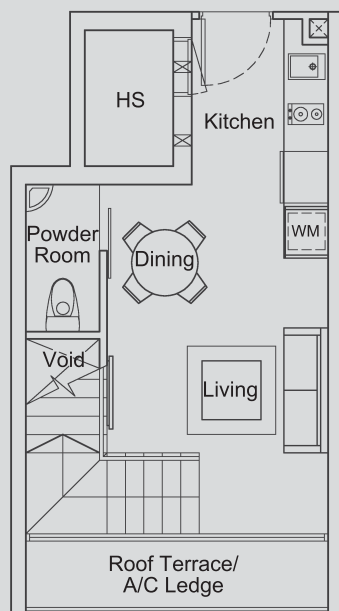
Upper



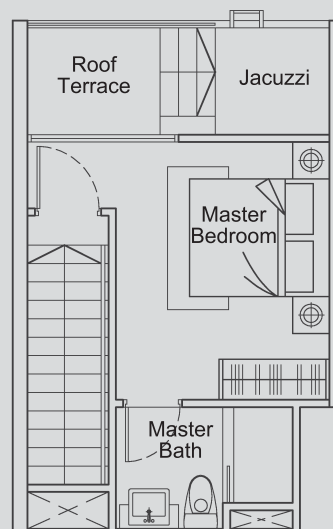
Type PH-K (1-Bedroom)

Unit #05-06

Area 667 sqft / 62 sqm
(inclusive of roof terrace,
a/c ledge & jacuzzi)

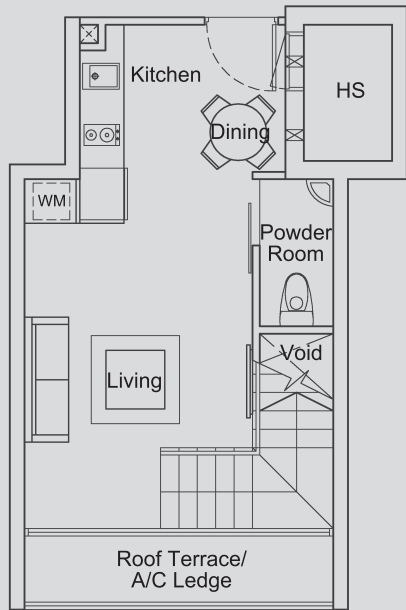


Lower

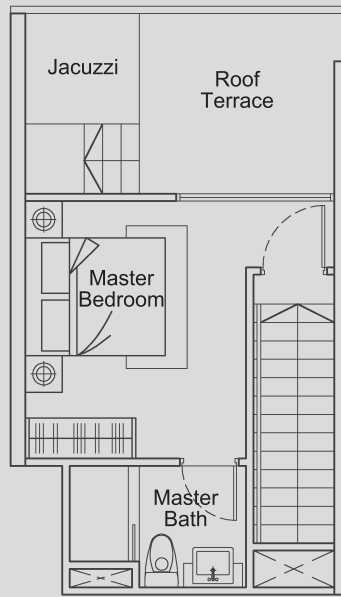


Upper





Lower

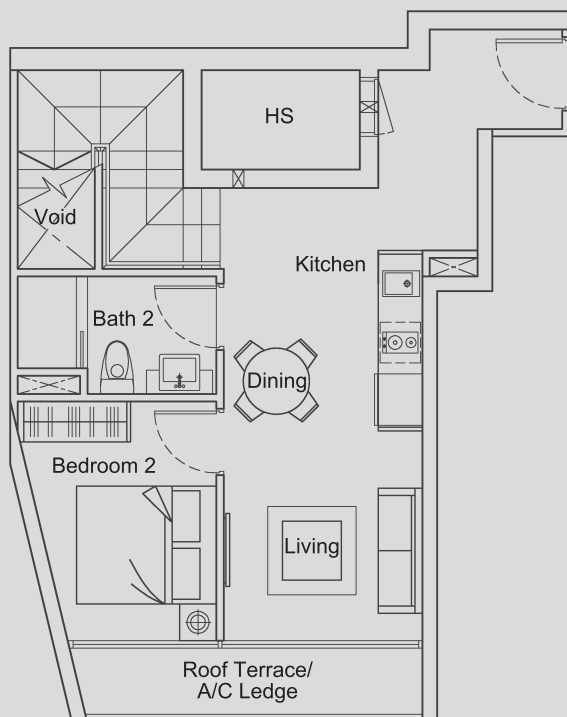


Upper

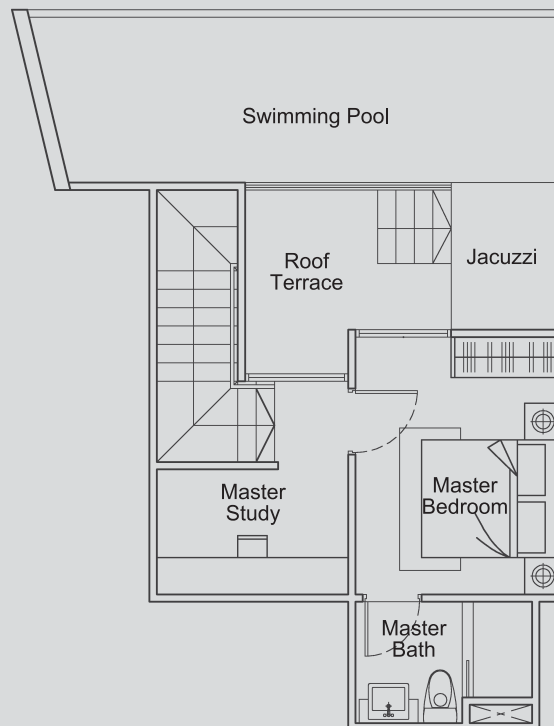
Type PH-L (1-Bedroom)

Unit #05-07

Area 732 sqft / 68 sqm
(inclusive of roof terrace,
a/c ledge & jacuzzi)



Lower

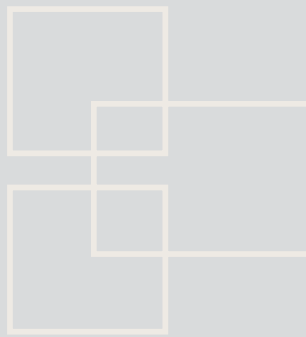


Upper

Type PH-M (2-Bedroom + Study)

Unit #05-08

Area 1195 sqft / 111 sqm
(inclusive of roof terrace,
swimming pool, a/c ledge & jacuzzi)

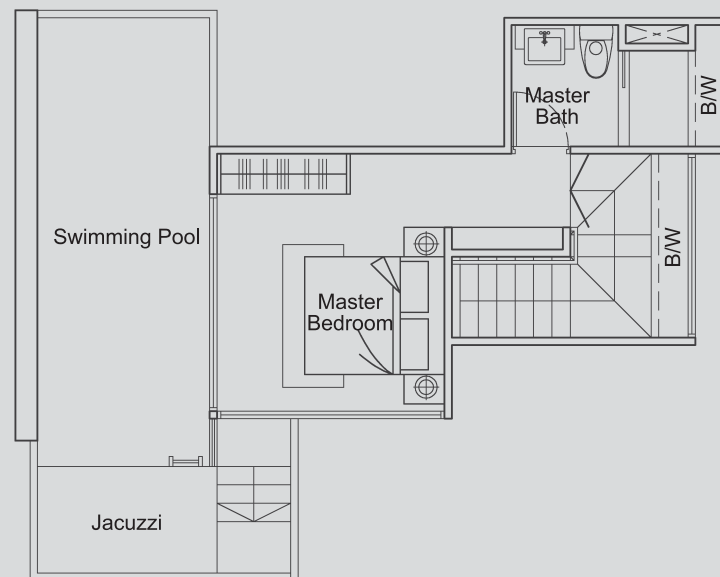
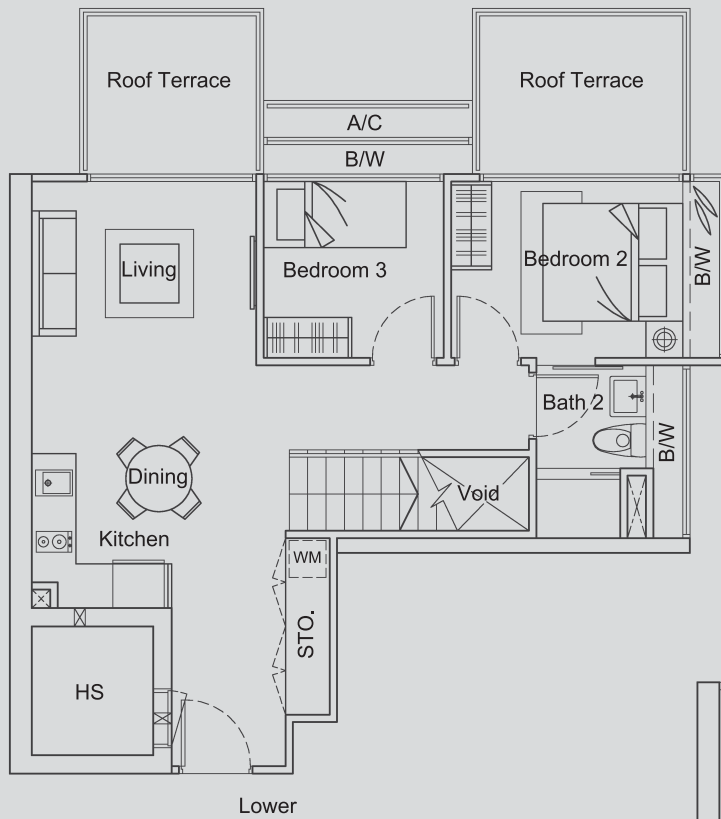


Type PH-Q (3-Bedroom)

Unit #05-09

Area 1367 sqft / 127 sqm

(inclusive of roof terrace,
swimming pool, a/c ledge & jacuzzi)



ANOTHER PRESTIGIOUS PROJECT BY

DEVELOPER

ASCENDER CAPITAL PTE LTD
(A MEMBER OF ASCEND GROUP)

ARCHITECT



INTERIOR DESIGNER



MARKETING AGENT



Developer: Ascender Capital Pte Ltd (ROC No.: 200707867G) • Developer's Licence No.: C0464 • Tenure Of Land: Freehold • Lots 622, 623, 624, 625 and 626 TS 18 at 83 to 91 Rangoon Road • BP No: A1694-00103-2008-BP01 dated 10 July 2008 • Expected TOP Date: 30 September 2011 • Expected Date of Legal Completion: 29 September 2014

While every reasonable care has been taken in preparing this brochure, the developer and its agents cannot be held responsible for any inaccuracies. All statements are believed to be correct but are not to be regarded as statements of representation of facts. All information and specifications are current at the time of going to the press and are subject to change as may be required and cannot form part of an offer or contract. All plans are subject to any amendments approved or may be approved by the relevant authority. All art renderings and illustrations contained in this brochure are artist's impressions only and photographs are only décor suggestions and none can be regarded as representation of fact. Areas are approximate measurements and subject to final survey.